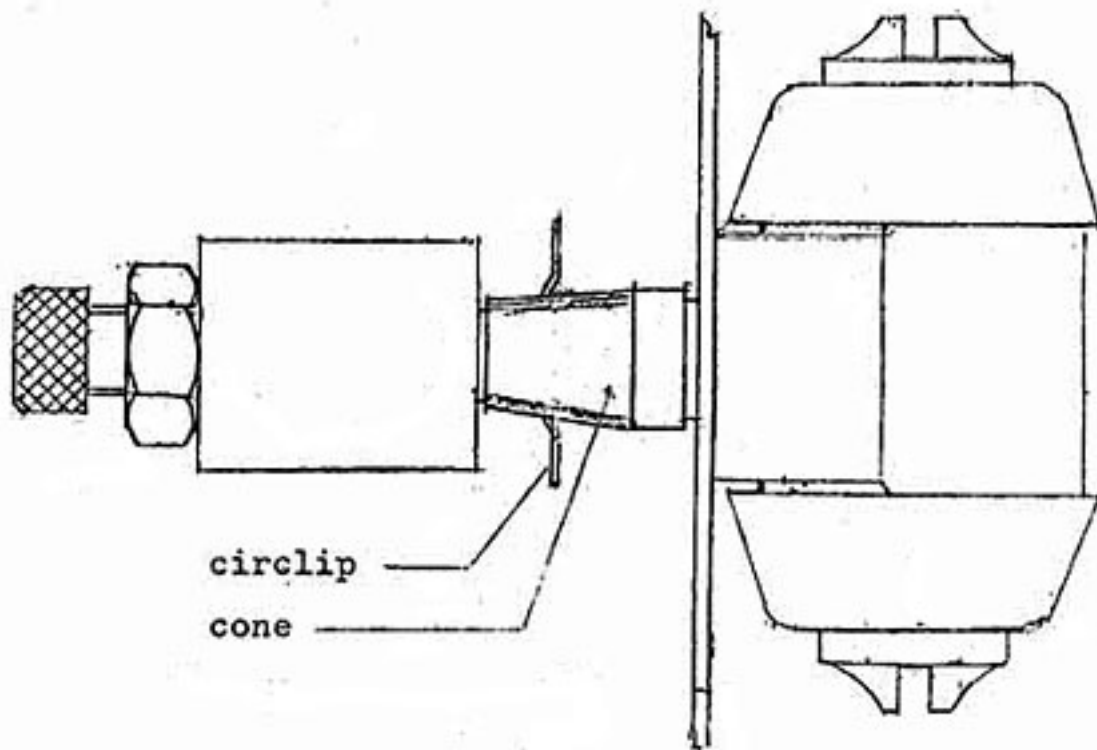


# BERNARD JONES ENGINEERING (PRINCE AUTO PARTS)

46 LISTLEY STREET, BRIDGNORTH, SHROPSHIRE. WV16 5BY  
TELEPHONE: 01746 762575/716460

## INSTRUCTIONS - CIRCLIP FITTING TOOL.



1. Remove the bleed screw and fit the wheel cylinder to the back plate. Replace the bleed screw.
2. Smear the cone and circlip with grease. Fit the tool to the wheel cylinder as shown.
3. Place the circlip onto the cone with the locking tabs facing away from the back plate.
4. Tighten the nut until the circlip has locked into the groove.  
Remove the tool from the wheel cylinder.

### NOTE.

To prevent the fluid draining from the master cylinder cut a length of wood to wedge between the brake pedal and the driver's seat. The pedal to be depressed about 1" (25mm)